

This instruction sheet is intended for use with the installation of an LGX Distribution Frame which shall be equipped with either Group 2 hardware [12-inch (305 mm) deep frame] or Group 7 hardware [15-inch (381 mm) deep frame].

1. SEQUENCE OF INSTALLATION AND CHECK LIST FOR LGX DF GROUP 2 OR GROUP 7 PARTS.

1.1 LGX Distributing Frame (ED-6C321-50) Group 2 Parts

Description	Quantity
Instruction Sheet (Installation)	1
Instruction Sheet (Cabling)	1
Screws and Nuts (Misc. Bags)	See Page 2
Duct Brackets, 12-inch	12
Duct Walls, Lower	2
Duct Walls, Upper	2
Cable Retainer, Left Hand	1
Cable Retainer, Right Hand	1
Cable Retainer Brackets	4
Top Brace	1
Lower Brace (Base)	1
Cable Aligners	2
Aligners Plate	2
Upper Raceway	1
Lower Raceway Assembly, BE1	1
JR4A Jumper Retainer Brackets	18
Jumper Retainer Extensions	9
Jumper Support Bracket*	1

* Used between two adjoining **LGX** Distributing Frames


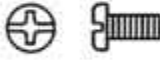



636-299-104-01
Instruction Sheet

1.2 LGX Distribution Frame (ED-6C321-50) Group 7 Parts

Description	Quantity
Instruction Sheet (Installation)	1
Instruction Sheet (Cabling)	1
Screws and Nuts (Misc. Bags)	See Page 2
Duct Brackets, 15-inch	12
Duct Walls, Lower	2
Duct Walls, Upper	2
Cable Retainer, Left Hand	1
Cable Retainer, Right Hand	1
Cable Brackets, Wide	2
Cable Brackets Narrow	8
Top Brace	1
Lower Brace (Base)	1
Cable Aligners	2
Aligners Plate	2
Upper Raceway	1
Lower Raceway Assembly, BE1	1
JR4A Jumper Retainer Brackets	18
Jumper Retainer Extensions	9
Jumper Support Bracket*	1

* Used between two adjoining **LGX** Distributing Frames

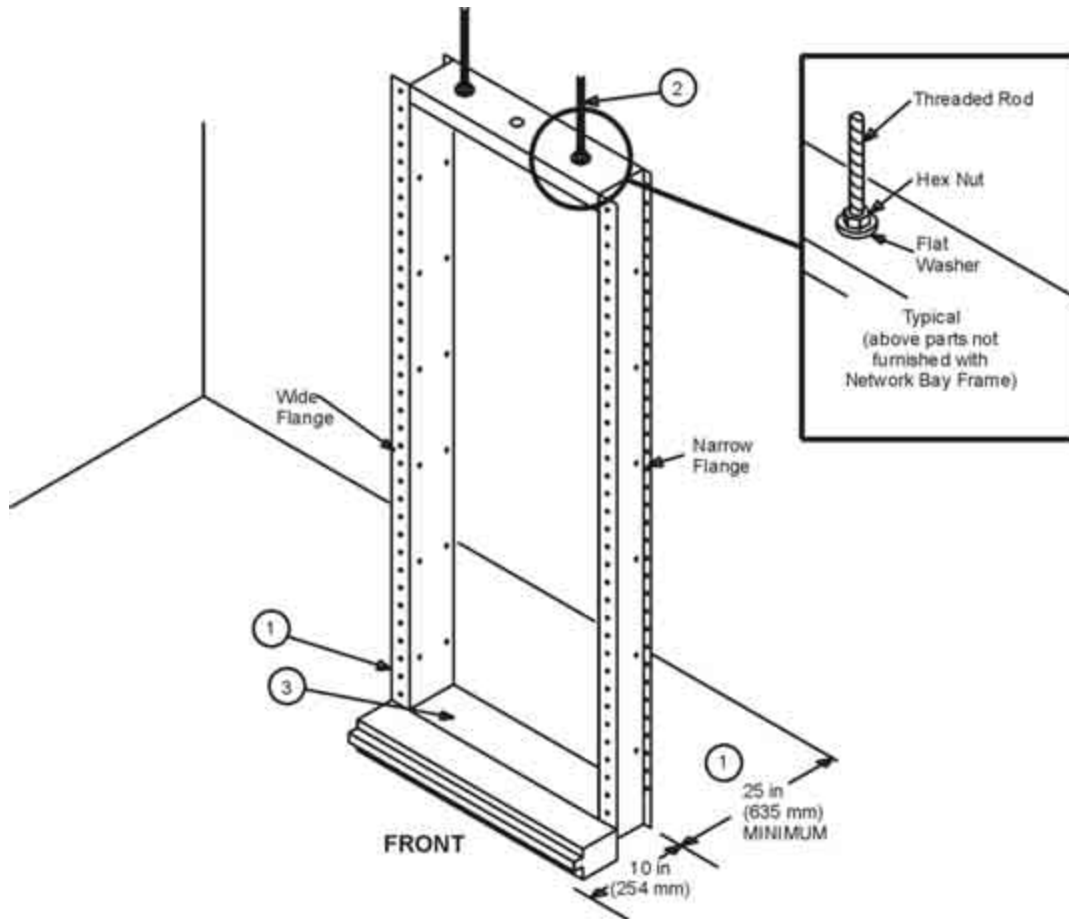
2. IDENTIFICATION TEMPLATE FOR GROUPS 2 AND 7 FASTENING HARDWARE

FASTENER DESCRIPTION	FOR GROUP 2 PARTS	FOR GROUP 7 PARTS
12-24 X 1/4 SCREW* (54/66) 	24 - DUCT BRACKETS 12-INCH BAY 8 - CABLE RETAINER BRACKETS 4 - CABLE RETAINERS, LH & RH 4 - TOP BRACE/DUCT WALLS 6 - BASE BRACE/DUCT WALLS 4 - TOP RACEWAY 4 - BASE RACEWAY	24 - DUCT BRACKETS, 15-INCH BAY 8 - CABLE RETAINER BRACKETS 4 - CABLE RETAINERS, LH & RH 4 - TOP BRACE/DUCT WALLS 6 - BASE BRACE/DUCT WALLS 4 - TOP RACEWAY 4 - BASE RACEWAY 4 - WIDE BRACKET, CABLE RETAINER 6 - NARROW BRACKET, CABLE RETAINER
6-32 X 5/16 SCREW* (24/24) 	24 - DUCT WALLS/DUCT BRACKETS	24 - DUCT WALLS/DUCT BRACKETS
12-24 X 3/8 SCREW* (44/44) 	4 - CABLE ALIGNERS, ALIGNER PLATES 36 - JUMPER RETAINERS 4 - JUMPER SUPPORT	4 - CABLE ALIGNERS, ALIGNER PLATES 36 - JUMPER RETAINERS 4 - JUMPER SUPPORT
10-24 X SCREW* (4/4) 	4 JUNCTION PLATE/BASE RACEWAY	4 JUNCTION PLATE/BASE RACEWAY
10-24 ACORN NUT (4/4) 	4 JUNCTION PLATE/BASE RACEWAY	4 JUNCTION PLATE/BASE RACEWAY

* Universal/Combination Head

636-299-104-01
Instruction Sheet

STEP 1. INSTALL NETWORK BAY FRAME (ED-SC501-50, GR1) PART OF ED-GC321-50, GR1 LGX DF OR SEISMIC NETWORK BAY FRAME (ED-SC801-50, GR1)

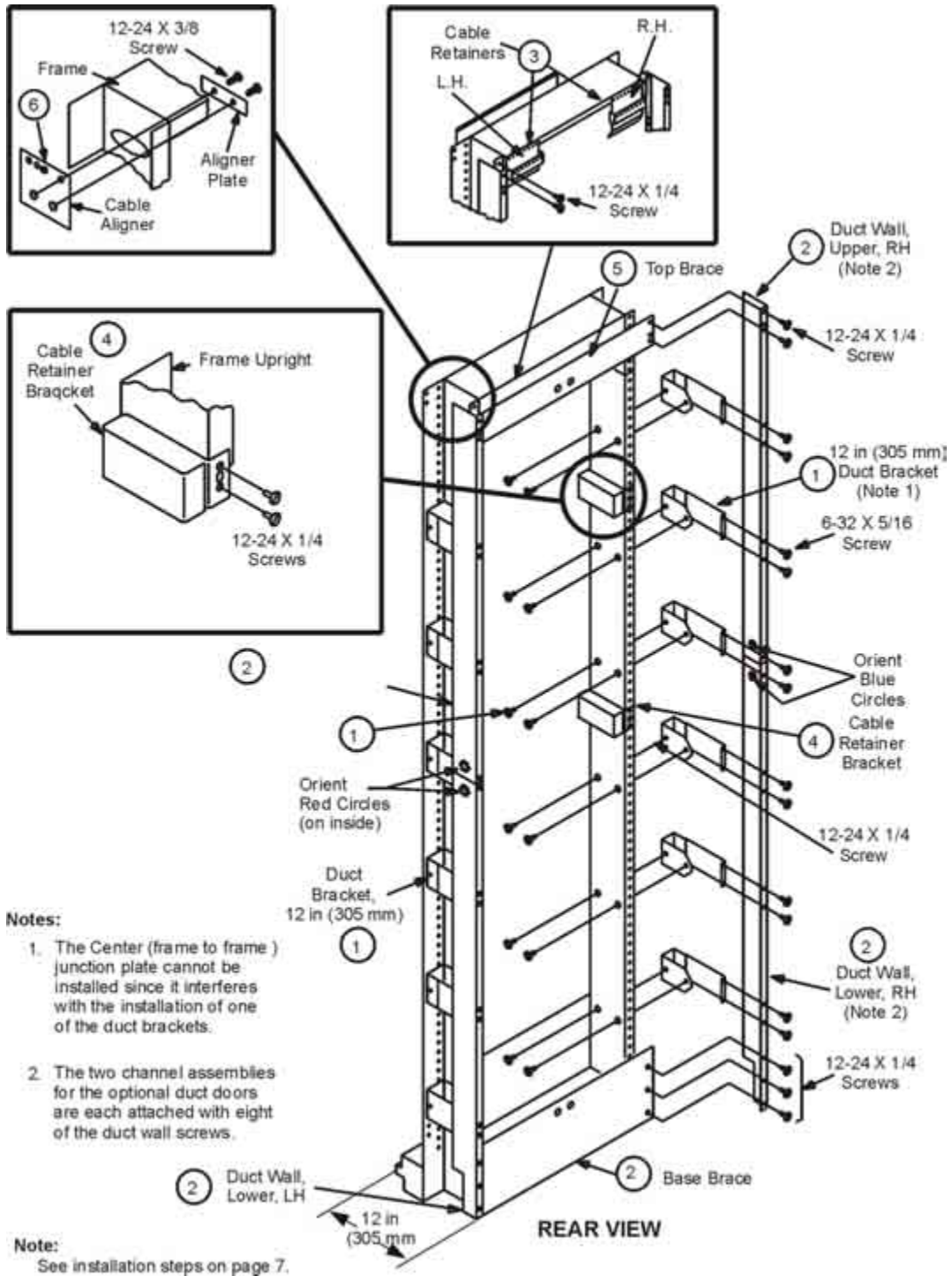


NOTE 1: Rear 2-inch guard rail should not be installed on network bay frames or seismic frames for LGX applications.

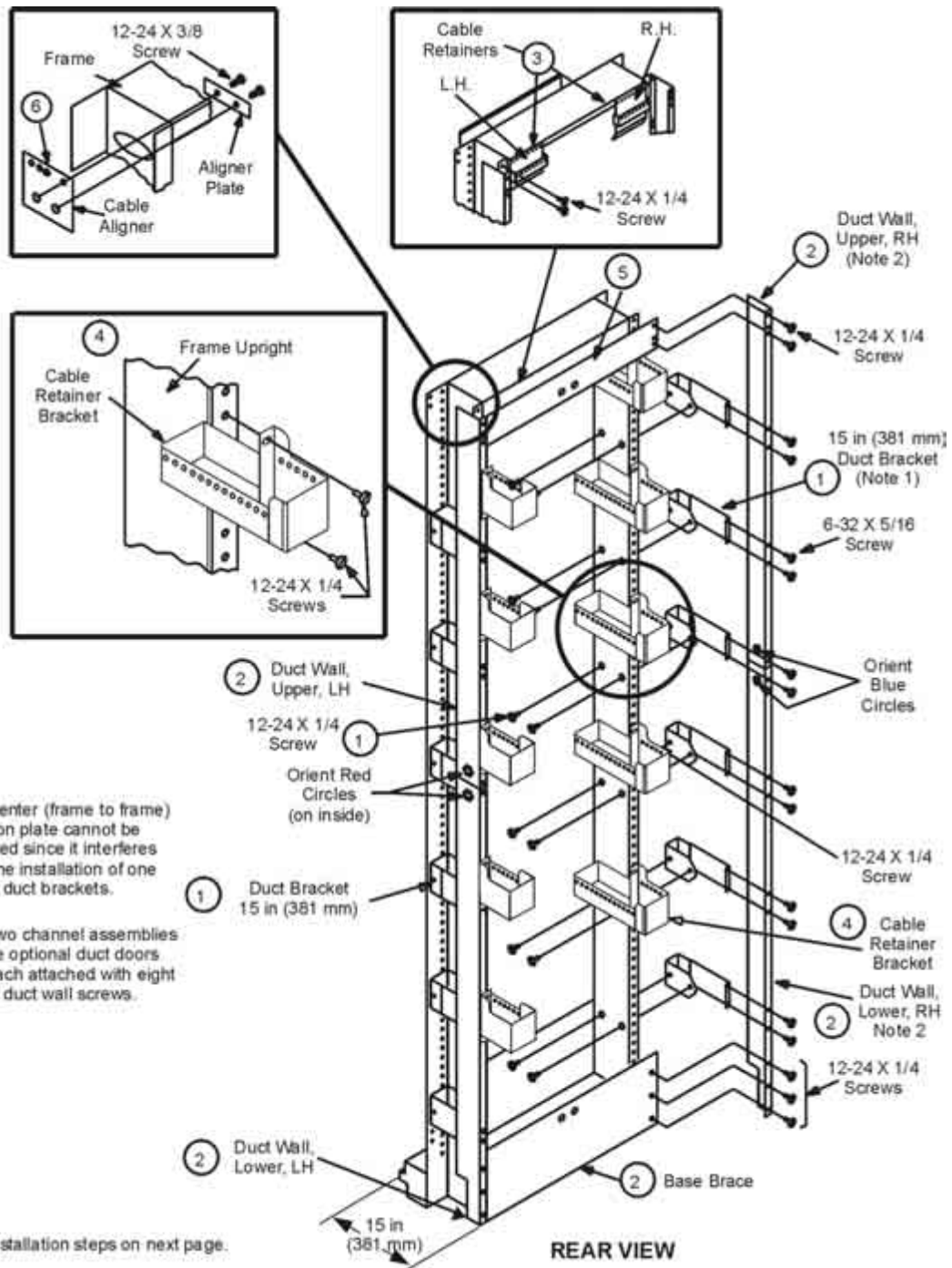
1. Position frame with wide flanges (front of frame) toward maintenance aisle. If rear of frame will be close to wall, mount components on rear of frame before securing frame to floor. A minimum of 25 inches (635 mm) of clearance from wall or lineup is recommended at rear of frame. If FEX1A-FB Rear Bracket Extension or Group 7 parts are used, 28 inches (711 mm) of clearance is recommended for the 15-inch (381 mm) deep frame.
2. Secure frame to overhead framing with locally obtained hardware in accordance with local practices. See Note 1 on page 4 for junction plate assembly.
3. Secure frame to floor using techniques described in ED-8C505-50 or ED-8C805-50 (seismic). Ground frame per ED-8C508-50 or ED-8C800-70 (seismic).

NOTE 2: Note 2 LGX DF parts may also be mounted on ED-BC501-50 network bay frames or ED-8C801-50 seismic frames GR2 [9ft. (2.7 m)] and GR3 [11 ft. (3.5 m)].

STEP 2. INSTALL REAR CABLING DUCTS, RETAINERS, AND ALIGNERS
(ED-GC321-50, Group 2)



STEP 2 - INSTALL REAR CABLING DUCTS, RETAINERS, AND ALIGNERS (ED-6C321-50, Group 7)

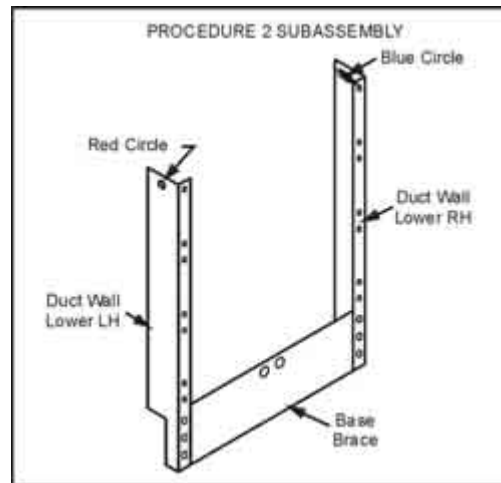


Notes:

1. The center (frame to frame) junction plate cannot be installed since it interferes with the installation of one of the duct brackets.
2. The two channel assemblies for the optional duct doors are each attached with eight of the duct wall screws.

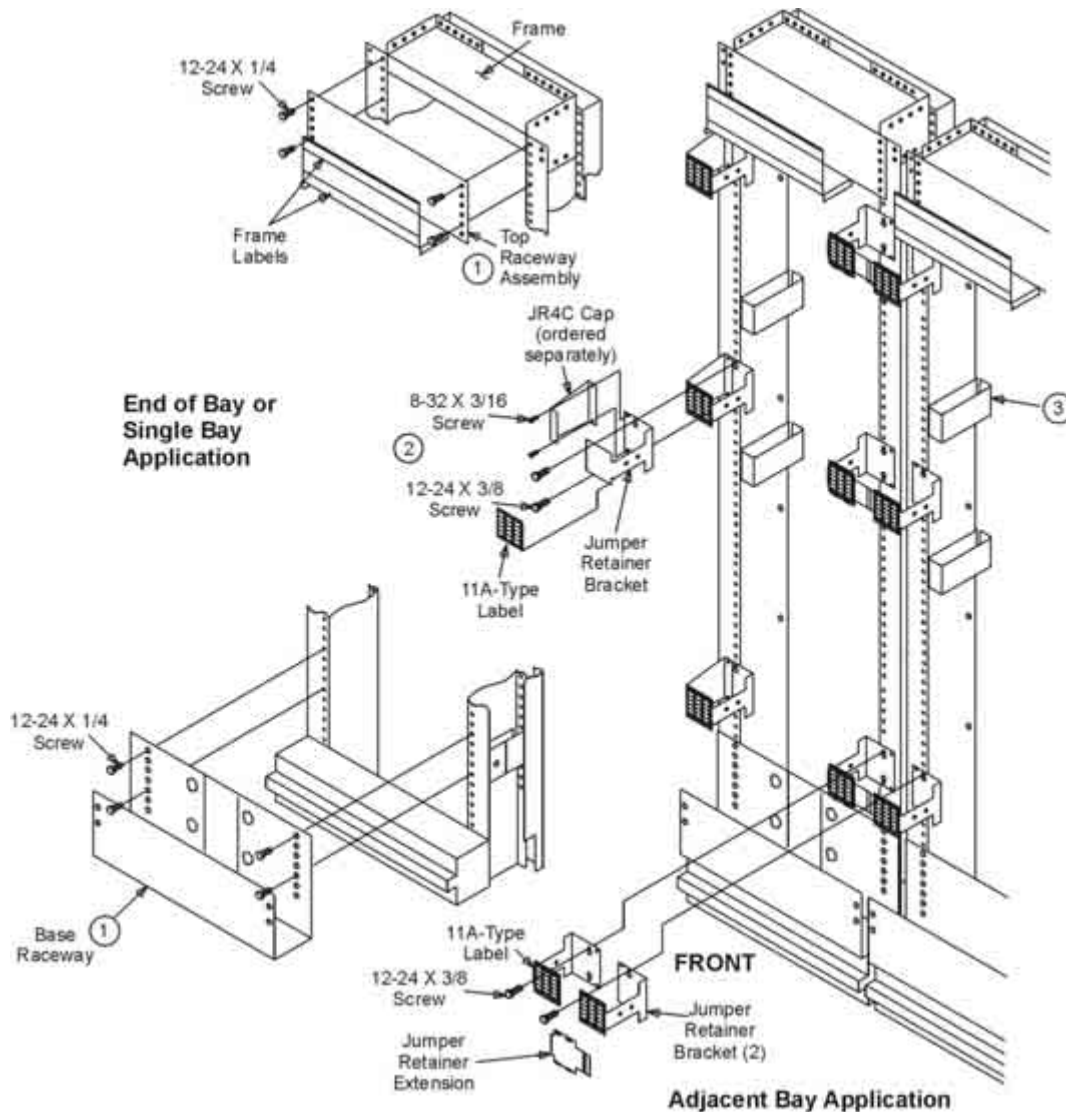
Note:
 See installation steps on next page.

STEP 2 - INSTALL REAR CABLING DUCTS, RETAINERS, AND ALIGNERS (Contd)



1. Install six duct brackets to each side of frame (see Note on previous page). If needed, attach duct Bracket extensions FEX1A-FB (must be ordered separately) to duct brackets. Do not tighten screws until after completing following step.
 2. Loosely attach lower duct wall sections to base brace forming a subassembly as shown above. Secure subassembly and upper duct wall sections to duct wall brackets or bracket extensions. Colored circles on each duct wall section are used for orienting pieces (see Step 2 illustration). Tighten screws for base brace and duct brackets. Each of two channel assemblies for optional duct doors is attached with eight duct wall screws. Where duct doors are to be installed, attach door channel assemblies, if available, during duct wall installation. See duct door instruction sheet (Comcode 845866375) for details.
 3. Mount LH and RH cable retainers to rear frame uprights at top of frame.
 4. (a) For **Group 2**, install four cable retainer brackets to frame uprights. Locate two on each side approximately 15 inches (38 cm) from top of frame and other two on each side just below mid-height of frame.
 (b) For **Group 7**, install two wide and eight narrow cable retainer brackets as shown in Step 2, page 5. Two wide brackets shall be located on each side approximately four inches from the top of the frame. The narrow brackets shall be located (in pairs, on each side of the frame) at approximately 16 inches (41 cm), 30 inches (76 cm), 44 inches (112 cm), and 58 inches (147 cm) respectively from top of frame.
- Note:** When lightguide shelves are installed on the frame, the cable retainer brackets may have to be relocated slightly to avoid screw interference with shelf brackets.
5. Mount top brace to duct walls.
 6. Install cable aligner and aligner plate to each side of frame.

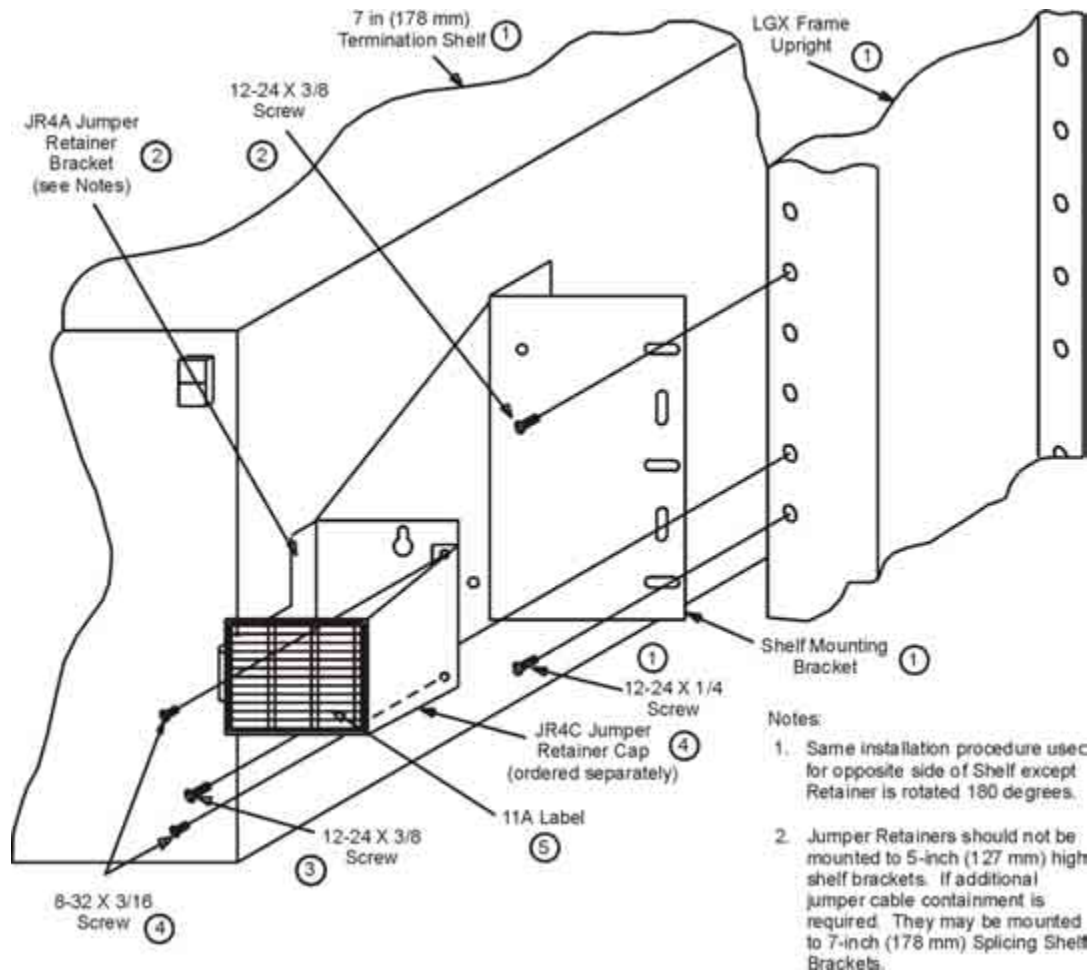
STEP 3 - INSTALL RACEWAYS AND JUMPER RETAINERS



1. Install top raceway assembly and base raceway.
2. If 7-inch (178 mm) termination shelves are available, mount shelves first and then mount jumper retainers on shelves single bay (see Step 4) or adjacent bay for end of bay or single bay applications. Install remaining jumper retainers on front of frame. Shelves mounted later will require removal of frame-mounted jumper retainers. Reinstall these jumper retainers on termination shelves or subassemblies.
3. Frame shown is equipped with Group 2 hardware. Cable brackets shown are not supplied with Group 7. For a Group 7 installation, the cable brackets in the figure on page 5 are used.

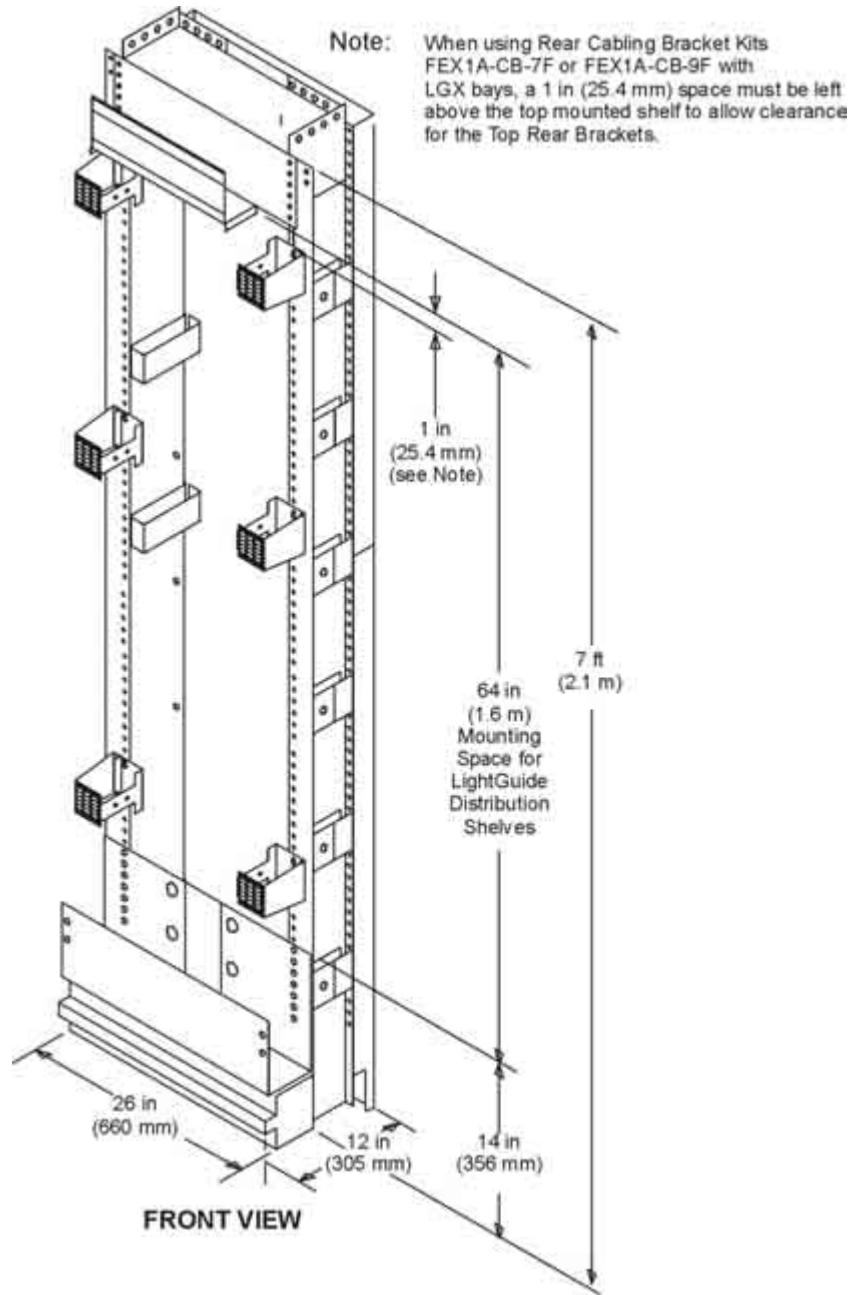
STEP 4 - INSTALL RETAINERS ON TERMINATION SHELF BRACKETS (END OF BAY OR SINGLE BAY APPLICATION SHOWN)

(END OF BAY OR SINGLE BAY APPLICATION SHOWN)



1. Install termination shelf with mounting brackets to LGX frame with two 12-24 by 1/4 screws furnished with shelf, one screw installed in bottom hole of each mounting bracket. Do not tighten screws.
2. Start 12-24 by 3/8 screw furnished for jumper retainers through top hole of each shelf mounting bracket as shown. Position retainer bracket top keyhole slot onto screw. Repeat procedure for opposite side of shelf bracket except rotate retainer 180 degrees. When seated, top of retainer bracket should be aligned with top of brackets.
3. Install 12-24 by 3/8 screw in bottom keyhole slot of each retainer bracket. Tighten all screws to complete installation.
4. Install separately ordered JR4C Caps to each retainer bracket with two 8-32 by 3/16 screws.
5. Install label on front of each retainer bracket.

**STEP 5 - COMPLETED ASSEMBLY OF LGX DISTRIBUTING FRAME, ED-6C321-50, GROUP
2 HARDWARE**

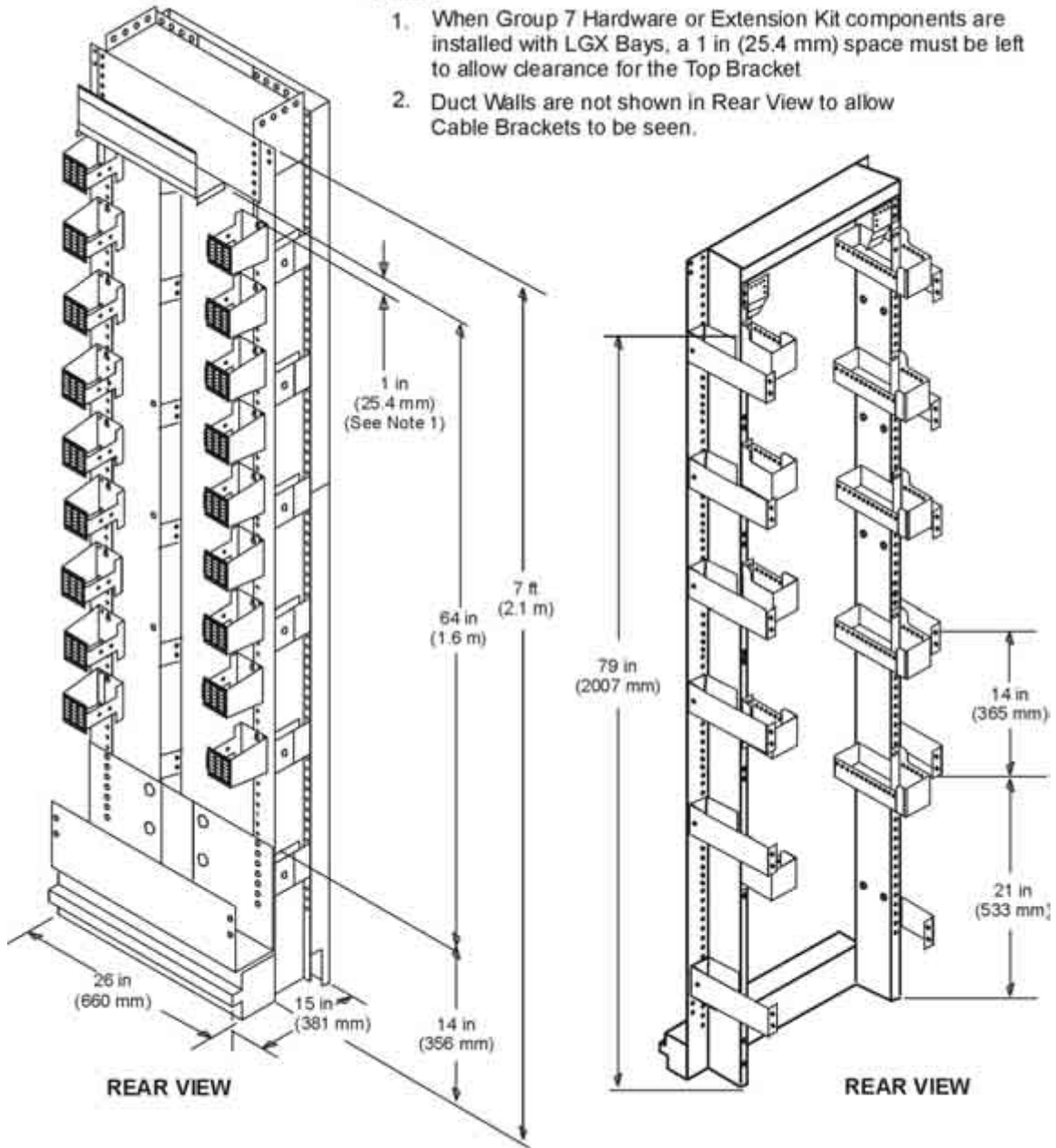


ED 6C321-50 GR1 LGX Distributing Frame

STEP 5 - COMPLETED ASSEMBLY OF LGX DISTRIBUTING FRAME, ED-6C321-50, GROUP 7 HARDWARE

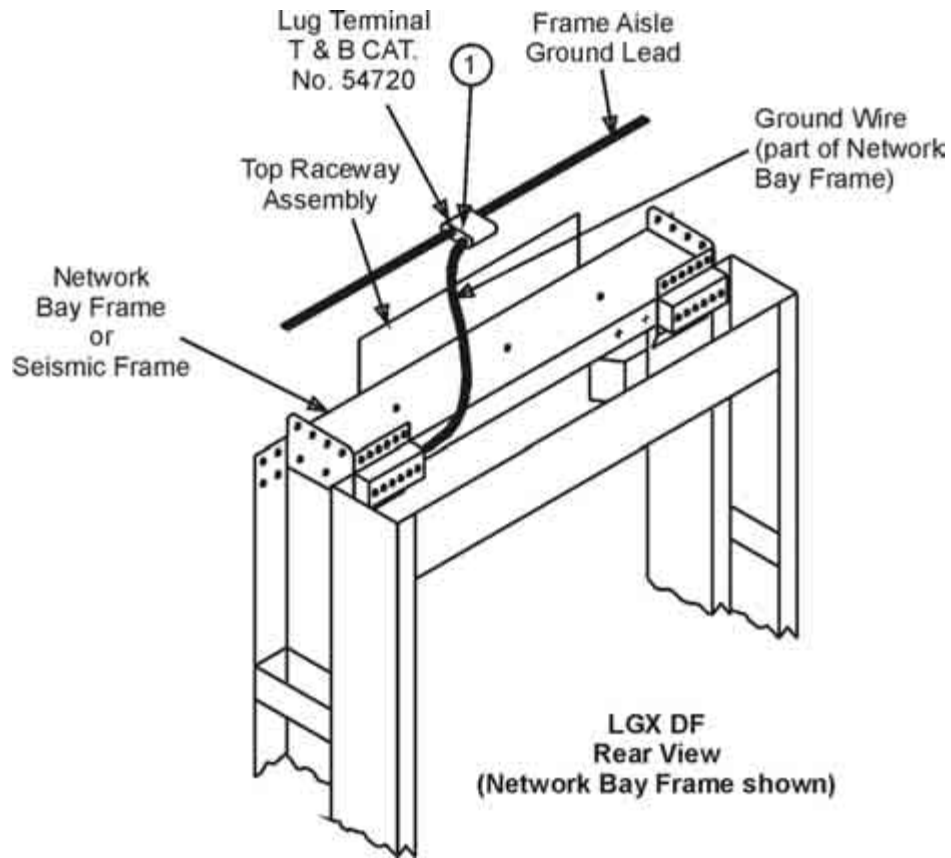
Notes:

1. When Group 7 Hardware or Extension Kit components are installed with LGX Bays, a 1 in (25.4 mm) space must be left to allow clearance for the Top Bracket
2. Duct Walls are not shown in Rear View to allow Cable Brackets to be seen.



ED6C321-50 GR1 LGX DISTRIBUTING FRAME

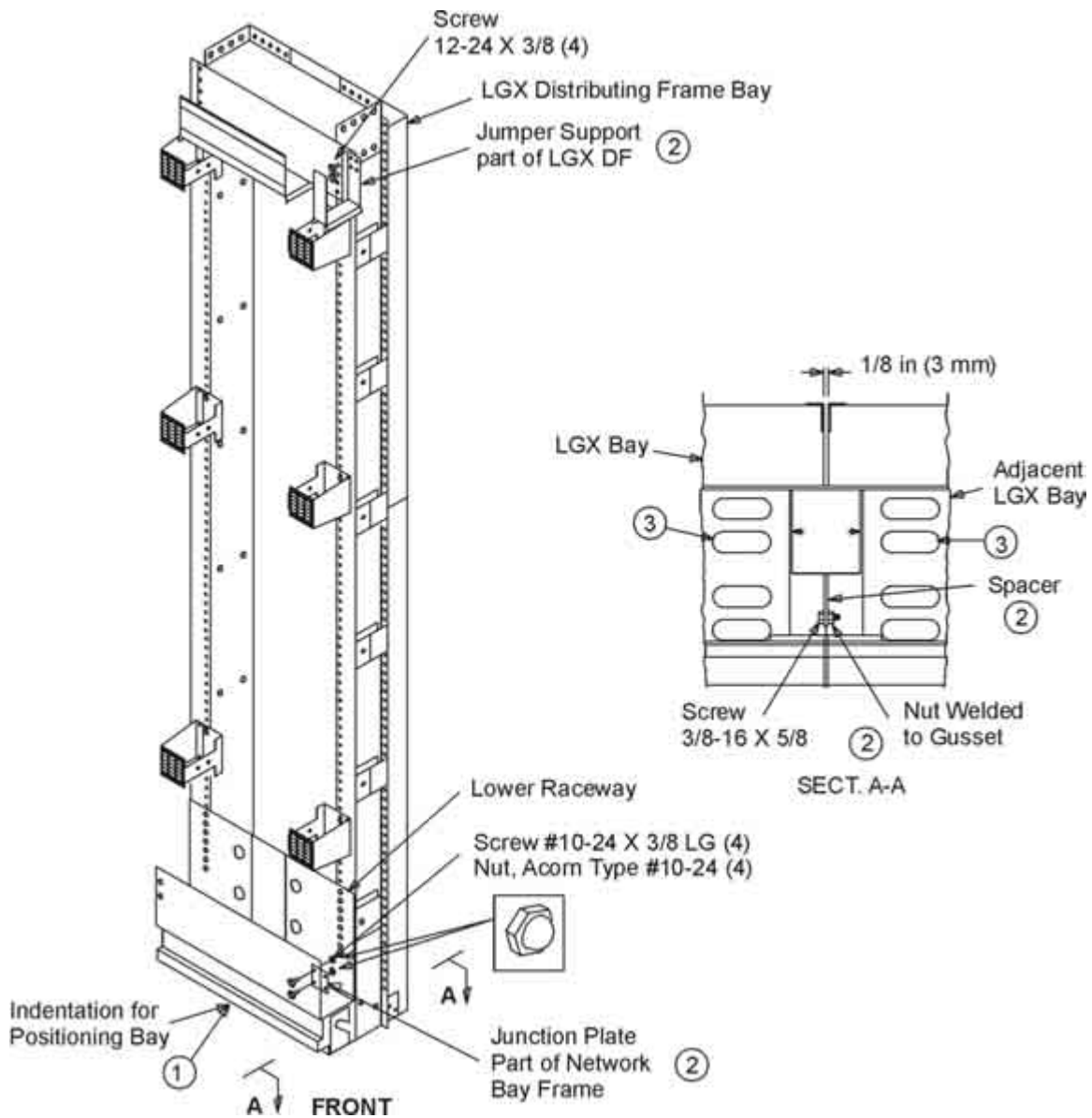
STEP 6 - INSTALL FRAME GROUND WIRE



1. Connect network bay frame or seismic frame ground wire assembly to frame aisle ground lead per local practice.

⇒ **NOTE:** Where outside plant cable ground lugs are attached to frame, surface paint must be removed.

STEP 7 - SECURE ADJACENT LGX DF BAYS



1. Align indentation (located in front of frame) with floor plan.
2. Attach spacer and junction plate at bottom of bay and jumper support at top.
3. Anchor frames to floor per local practice.
4. Procedures shown are on Group 2 hardware (12 inch). Group 7 hardware (15 inch) is identical with respect to this operation.